

**Table 1 Percentage changes in Workforce Jobs by main industrial sector, Wales and UK average**

	<b>Wales – quarterly% change</b>	<b>UK – quarterly % change</b>
Agriculture, forestry and fishing	15.7%	15.4%
Mining and quarrying	-7.5%	3.8%
Utilities	0.2%	1.7%
Manufacturing	4.1%	0.1%
Construction	10.9%	2.5%
Total services	1.0%	1.2%
All jobs	2.3%	1.4%

Source: ONS

ge, quarter to December 2013 (seasonally adjusted)

**Table 2: Self-employment vs Employee Jobs, 2008 - 2013**

Year	UK		Wales	
	Employees	Self-Employed	Employees	Self-Employed
2008	24,815,300	3,543,000	1,121,600	160,900
2009	24,321,000	3,563,600	1,092,100	155,800
2010	24,216,100	3,635,500	1,085,000	156,000
2011	24,248,700	3,702,300	1,094,600	157,000
2012	24,333,200	3,833,500	1,099,100	164,000
2013	24,601,900	3,886,000	1,118,000	170,800
Change 2010-2013	385,800	250,500	33,000	14,800
Percentage change 2010 - 2013	1.60%	6.90%	3.00%	9.50%

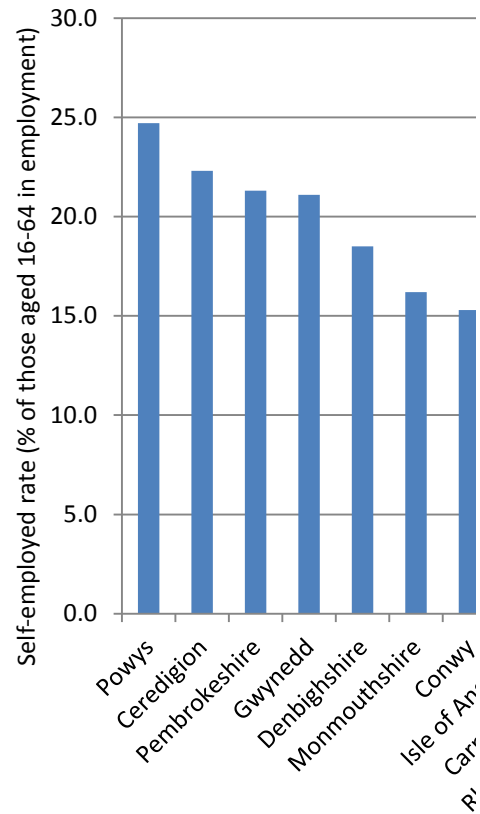
Source: StatsWales: <https://statswales.wales.gov.uk/Catalogue/Business-Economy-and-Labour-Market/Peop>

[le-and-Work/Employment/Persons-Employed/StatusOfEmployedPersons-by-WelshLocalAuthority-Mea:](#)

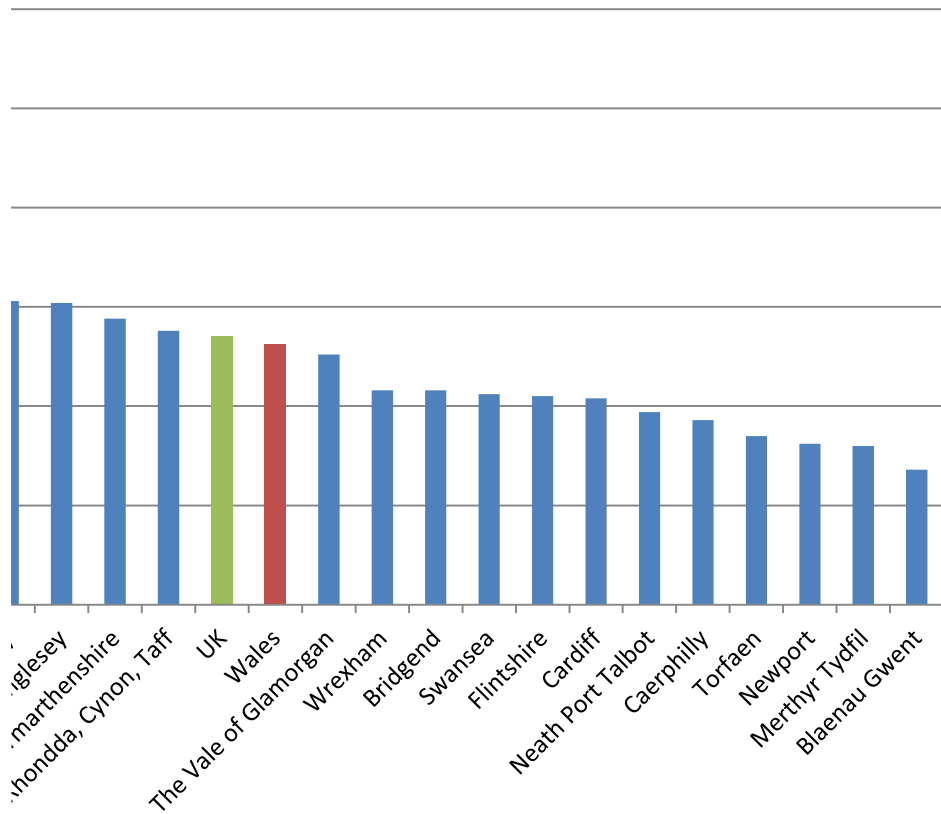
sure

**Figure 1: Self-Employment Rate (aged 16-64) by Welsh Local Authority, 2013**

	<b>Self-employment rate</b>
Powys	24.7
Ceredigion	22.3
Pembrokeshire	21.3
Gwynedd	21.1
Denbighshire	18.5
Monmouthshire	16.2
Conwy	15.3
Isle of Anglesey	15.2
Carmarthenshire	14.4
Rhondda, Cynon, Taff	13.8
UK	13.5
Wales	13.1
The Vale of Glamorgan	12.6
Wrexham	10.8
Bridgend	10.8
Swansea	10.6
Flintshire	10.5
Cardiff	10.4
Neath Port Talbot	9.7
Caerphilly	9.3
Torfaen	8.5
Newport	8.1
Merthyr Tydfil	8.0
Blaenau Gwent	6.8



Source: StatsWales: <https://statswales.wales.gov.uk/Catalogue/Business-Economy-and-Labour-Market/Pe>



[ople-and-Work/Employment/Persons-Employed/StatusOfEmployedPersons-by-WelshLocalAuthority-M](#)

[asure](#)