

**Table 1: Economic Activity Rates (excluding students) by local authority area, 2007 - 2013**

		Year ending 31 Dec 2007	Year ending 31 Dec 2013	Change 2007 - 2013
<b>United Kingdom</b>		<b>20.5</b>	<b>18.8</b>	<b>-1.7</b>
<b>Wales</b>		<b>24</b>	<b>21</b>	<b>-3</b>
<b>West Wales and the Valleys</b>	Isle of Anglesey	26.3	21	-5.4
	Gwynedd	22.1	21.2	-0.9
	Conwy	21.8	20.5	-1.3
	Denbighshire	25.8	21.1	-4.8
	Ceredigion	27.9	24.7	-3.2
	Pembrokeshire	24	21.8	-2.2
	Carmarthenshire	26.2	23.9	-2.3
	Swansea	24	22.6	-1.4
	Neath Port Talbot	31.4	23.2	-8.2
	Bridgend	24.5	20.9	-3.7
	Rhondda, Cynon, Taff	25.4	21.7	-3.7
	Merthyr Tydfil	29.2	26.7	-2.6
	Caerphilly	27.7	21.8	-5.9
	Blaenau Gwent	29.8	25.5	-4.3
Torfaen	27.1	21.6	-5.5	
<b>East Wales</b>	Flintshire	20.9	19.5	-1.5
	Wrexham	19.6	17.6	-2
	Powys	21	19.1	-1.8
	The Vale of Glamorgan	19.3	19	-0.3
	Cardiff	21.2	17.9	-3.4
	Monmouthshire	20	16.3	-3.7
	Newport	22	23.2	1.2

Source: StatsWales

<https://statswales.wales.gov.uk/Catalogue/Business-Economy-and-Labour-Market/People-and-Work/Econo>

Note: These figures are based on the Annual Population Survey, and are not directly comparable with the headline figures s

[omic-Inactivity/EconomicInactivityRatesExcludingStudents-by-WelshLocalArea-Year](#)  
shown in Figures 1 and 2 above.

[Table 2 – Achievement of outcomes against targets\[1\]](#)

<b>Outcome</b>	<b>Number of participants achieving outcome</b>
Entered voluntary work, completed short job-focused course or attended job interview	2,387
Gained qualifications	357
Entered Further Learning	48

Source: Inclusion, 2013

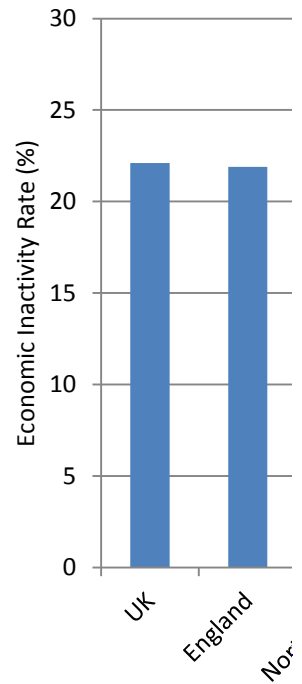
[\[1\] Data taken from June 2012 WEFO return of participants.](#)

<b>Proportion achieving outcome</b>	<b>Target proportion achieving outcome</b>	<b>Variance</b>
35%	32%	3%
5%	5%	0%
1%	1%	0%

**Figure 1: Economic Inactivity Rates (seasonally adjusted), UK Regions, Nov 2013 - Jan 2014**

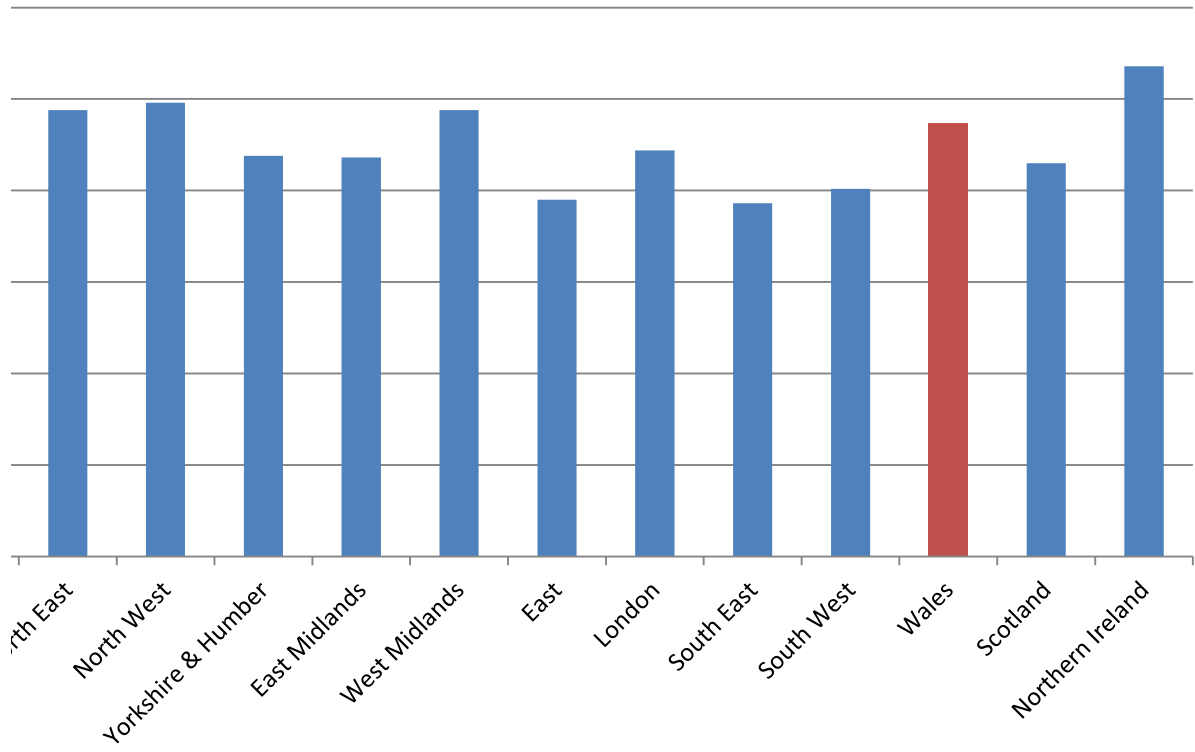
Nov 2013 to Jan 2014

UK	22.1
England	21.9
North East	24.4
North West	24.8
Yorkshire & Humber	21.9
East Midlands	21.8
West Midlands	24.4
East	19.5
London	22.2
South East	19.3
South West	20.1
Wales	23.7
Scotland	21.5
Northern Ireland	26.8



Source: StatsWales

<https://statswales.wales.gov.uk/Catalogue/Business-Economy-and-Labour-Mark>

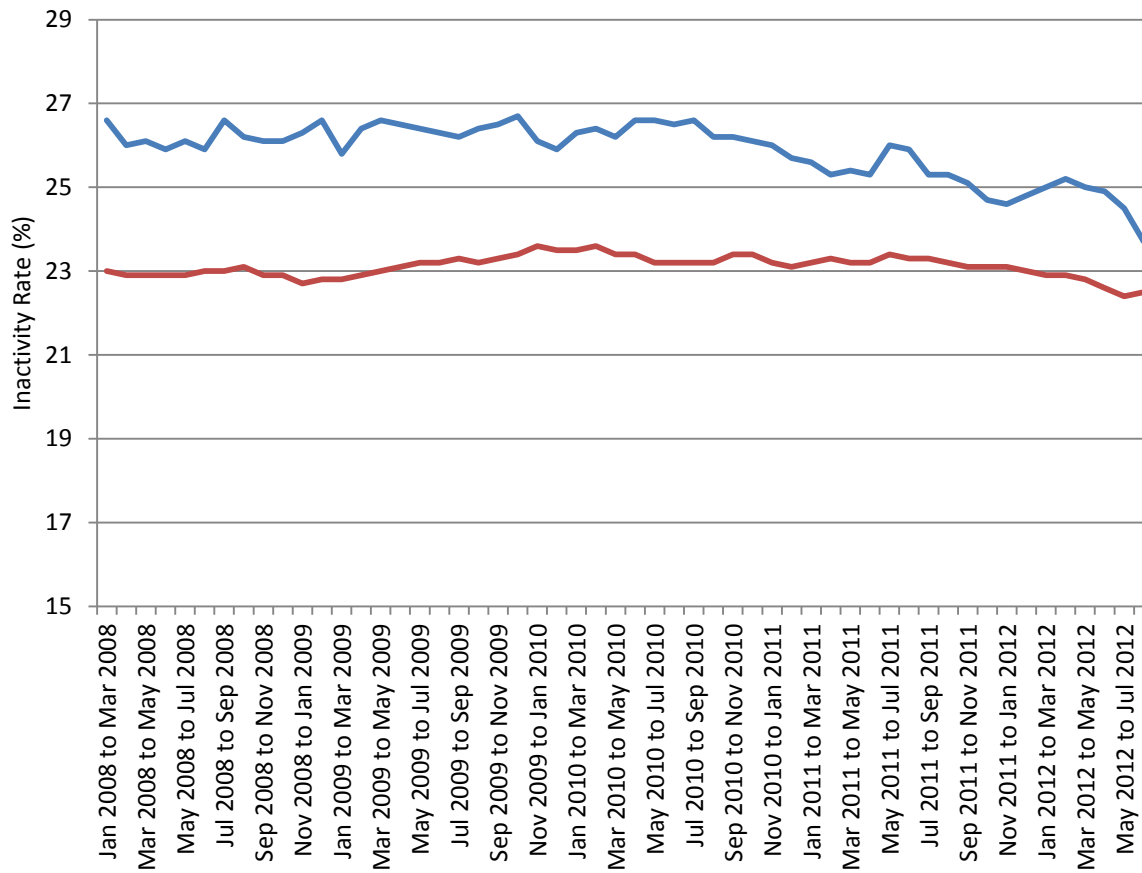


**Figure 2: Economic Inactivity Rates (seasonally adjusted), UK Regions, January 2008 - Janua**

	Jan 2008 to Mar 2008	Feb 2008 to Apr 2008	Mar 2008 to May 2008	Apr 2008 to Jun 2008	May 2008 to Jul 2008	Jun 2008 to Aug 2008	Jul 2008 to Sep 2008	Aug 2008 to Oct 2008
Wales	26.6	26	26.1	25.9	26.1	25.9	26.6	26.2
UK	23	22.9	22.9	22.9	22.9	23	23	23.1
Gap	3.6	3.1	3.2	3	3.2	2.9	3.6	3.1

Source: StatsWales

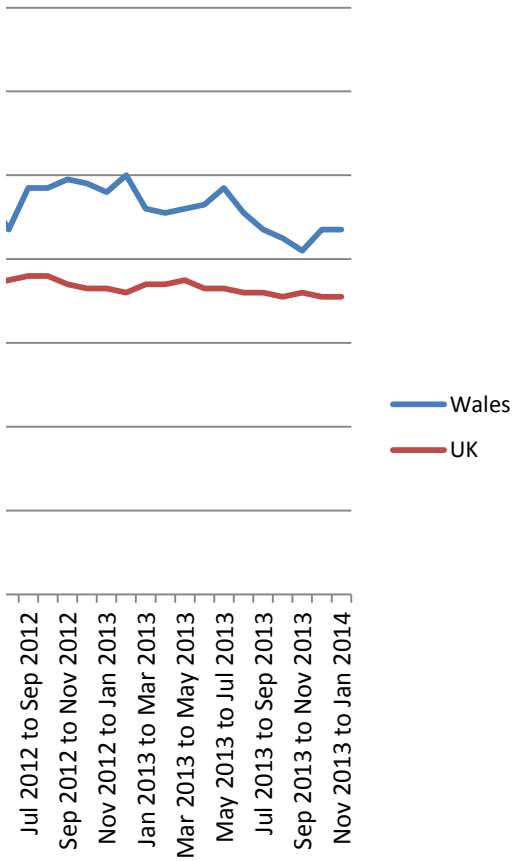
<https://statswales.wales.gov.uk/Catalogue/Business-Economy-and-Labour-Market/People-and-Work/E>



ry 2014

Sep 2008 to Nov 2008	Oct 2008 to Dec 2008	Nov 2008 to Jan 2009	Dec 2008 to Feb 2009	Jan 2009 to Mar 2009	Feb 2009 to Apr 2009	Mar 2009 to May 2009	Apr 2009 to Jun 2009	May 2009 to Jul 2009
26.1	26.1	26.3	26.6	25.8	26.4	26.6	26.5	26.4
22.9	22.9	22.7	22.8	22.8	22.9	23	23.1	23.2
3.2	3.2	3.6	3.8	3	3.5	3.6	3.4	3.2

[conomic-Inactivity/EconomicInactivityRates-by-UKCountryEnglishRegion-Quarter](#)





Jun 2009 to Aug 2009	Jul 2009 to Sep 2009	Aug 2009 to Oct 2009	Sep 2009 to Nov 2009	Oct 2009 to Dec 2009	Nov 2009 to Jan 2010	Dec 2009 to Feb 2010	Jan 2010 to Mar 2010	Feb 2010 to Apr 2010
26.3	26.2	26.4	26.5	26.7	26.1	25.9	26.3	26.4
23.2	23.3	23.2	23.3	23.4	23.6	23.5	23.5	23.6
3.1	2.9	3.2	3.2	3.3	2.5	2.4	2.8	2.8

Mar 2010 to May 2010	Apr 2010 to Jun 2010	May 2010 to Jul 2010	Jun 2010 to Aug 2010	Jul 2010 to Sep 2010	Aug 2010 to Oct 2010	Sep 2010 to Nov 2010	Oct 2010 to Dec 2010	Nov 2010 to Jan 2011
26.2	26.6	26.6	26.5	26.6	26.2	26.2	26.1	26
23.4	23.4	23.2	23.2	23.2	23.2	23.4	23.4	23.2
2.8	3.2	3.4	3.3	3.4	3	2.8	2.7	2.8

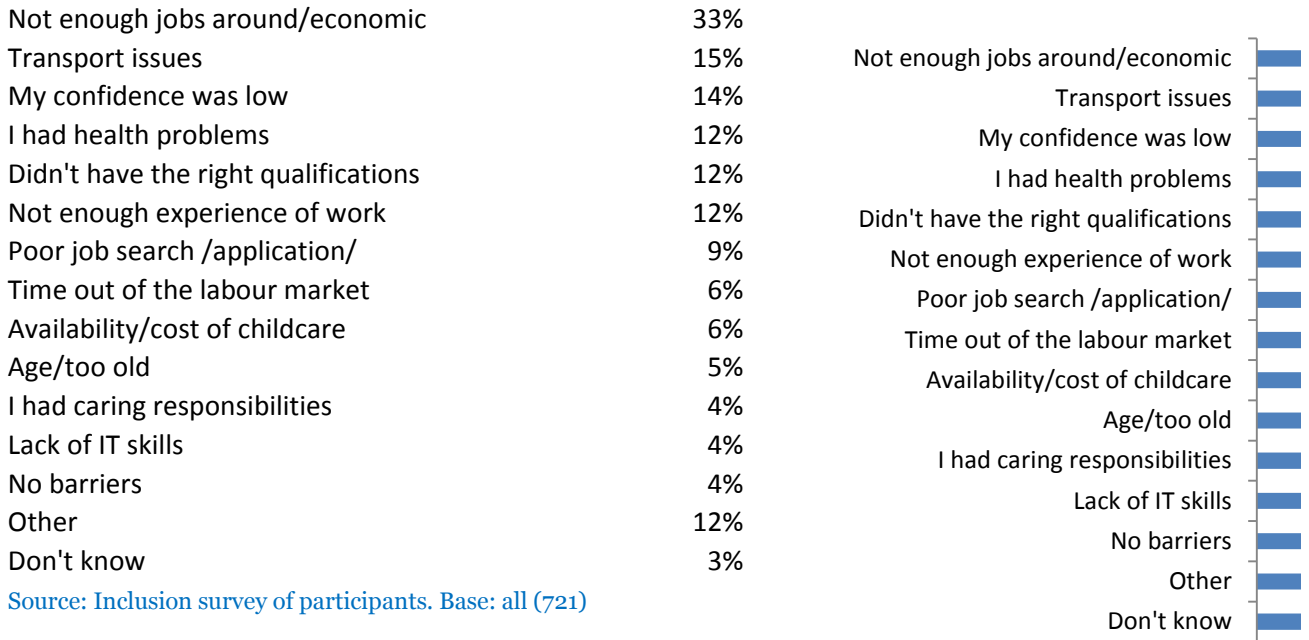
Dec 2010 to Feb 2011	Jan 2011 to Mar 2011	Feb 2011 to Apr 2011	Mar 2011 to May 2011	Apr 2011 to Jun 2011	May 2011 to Jul 2011	Jun 2011 to Aug 2011	Jul 2011 to Sep 2011	Aug 2011 to Oct 2011
25.7	25.6	25.3	25.4	25.3	26	25.9	25.3	25.3
23.1	23.2	23.3	23.2	23.2	23.4	23.3	23.3	23.2
2.6	2.4	2	2.2	2.1	2.6	2.6	2	2.1

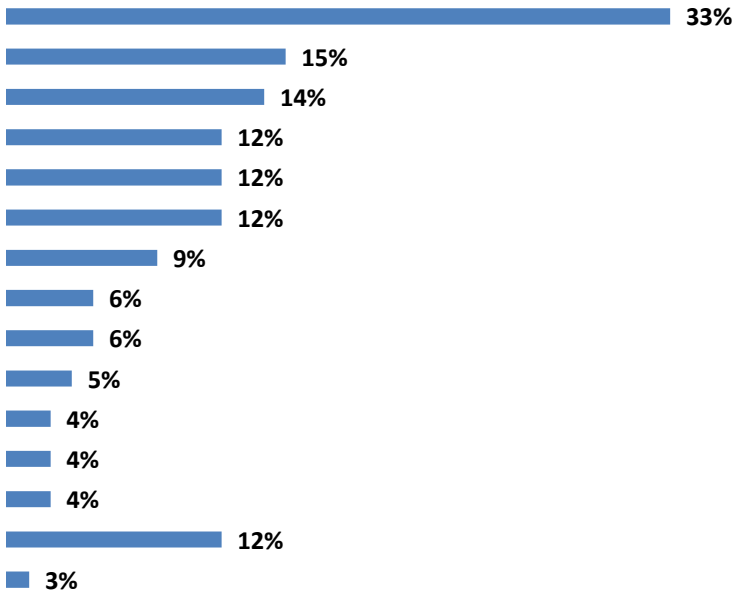
Sep 2011 to Nov 2011	Oct 2011 to Dec 2011	Nov 2011 to Jan 2012	Dec 2011 to Feb 2012	Jan 2012 to Mar 2012	Feb 2012 to Apr 2012	Mar 2012 to May 2012	Apr 2012 to Jun 2012	May 2012 to Jul 2012
25.1	24.7	24.6	24.8	25	25.2	25	24.9	24.5
23.1	23.1	23.1	23	22.9	22.9	22.8	22.6	22.4
2	1.6	1.5	1.8	2.1	2.3	2.2	2.3	2.1

Jun 2012 to Aug 2012	Jul 2012 to Sep 2012	Aug 2012 to Oct 2012	Sep 2012 to Nov 2012	Oct 2012 to Dec 2012	Nov 2012 to Jan 2013	Dec 2012 to Feb 2013	Jan 2013 to Mar 2013	Feb 2013 to Apr 2013
23.7	24.7	24.7	24.9	24.8	24.6	25	24.2	24.1
22.5	22.6	22.6	22.4	22.3	22.3	22.2	22.4	22.4
1.2	2.1	2.1	2.5	2.5	2.3	2.8	1.8	1.7

Mar 2013 to May 2013	Apr 2013 to Jun 2013	May 2013 to Jul 2013	Jun 2013 to Aug 2013	Jul 2013 to Sep 2013	Aug 2013 to Oct 2013	Sep 2013 to Nov 2013	Oct 2013 to Dec 2013	Nov 2013 to Jan 2014
24.2	24.3	24.7	24.1	23.7	23.5	23.2	23.7	23.7
22.5	22.3	22.3	22.2	22.2	22.1	22.2	22.1	22.1
1.7	2	2.4	1.9	1.5	1.4	1	1.6	1.6

**Figure 3: Main barriers to employment, South West Workways Participants**



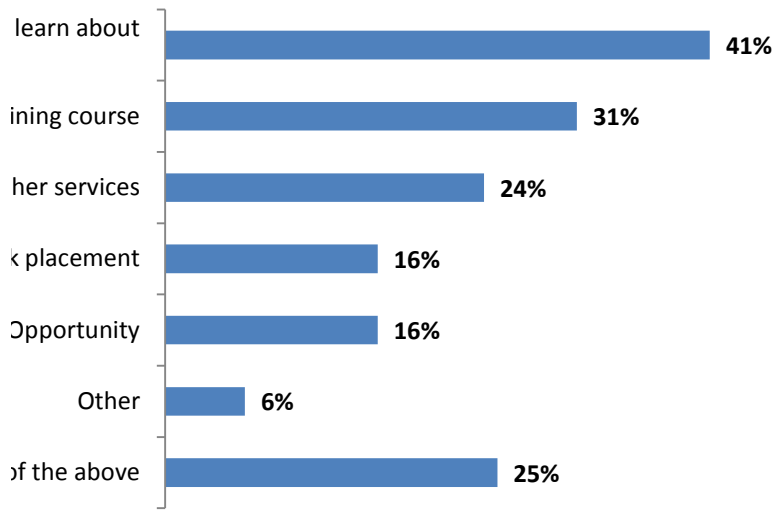




**Figure 4: Activities undertaken through Workways**

Group sessions, for example, to learn about jobsearch	41%	Group sessions, for example, to jobsearch
Started a training course	31%	Started a tra
Helped to access other services	24%	Helped to access ot
Unpaid volunteering/work placement	16%	Unpaid volunteering/worl
Temporary Job Opportunity	16%	Temporary Job O
Other	6%	None c
None of the above	25%	

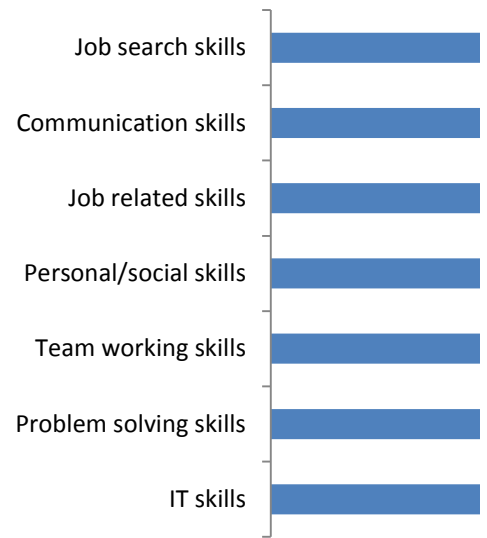
Source: Inclusion survey of participants. Base: all (721)



**Figure 5: Skills gained through Workways participation**

Job search skills	65%
Communication skills	63%
Job related skills	58%
Personal/social skills	55%
Team working skills	53%
Problem solving skills	52%
IT skills	33%

Source: Inclusion survey of participants. Base: all (721)



65%

63%

58%

55%

53%

52%

33%